

ISAQUARTZ

Cal 331 / 103

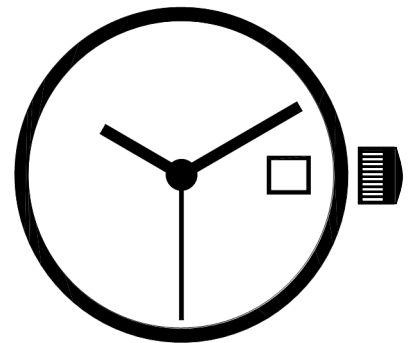


SWISS MADE



FAR EAST ASSEMBLY

11 1/2 '''
25.60 mm
H. 2.50



DATASHEET

BASIC 3 HANDS DATE

28

Date by
Window
(Big Date Available)



Strong motor
(optional)

EOL

End Of Life

ISASWISS

WATCH MECHANISMS

In conformity with RoHS standard

Doc. n° 0312165 - E Up date : 13.03.2014 - Page 1



Caractéristiques :

Mouvement cœur métallique réparable, 3 aiguilles, quantième.
Mouvement électronique à quartz. Moteur rotatif pas à pas, 1 pas par seconde.
Signal de fin de vie de pile: Déplacement de l'aiguille de petite seconde de 4 pas toutes les 4 secondes.
Dispositif mécanique et électronique. Correcteur de quantième rapide.
Tige 3 positions.
5 rubis.

Characteristics :

Repairable metallic heart movement, 3 hands, date.
Electronic quartz movement. Rotary stepping motor, 1 step per second.
End of battery life signal: Indication by small second hand jumping 4 successive steps every 4 seconds.
Stop device and current breaker. Quick date correction.
3 positions stem.
5 jewels.

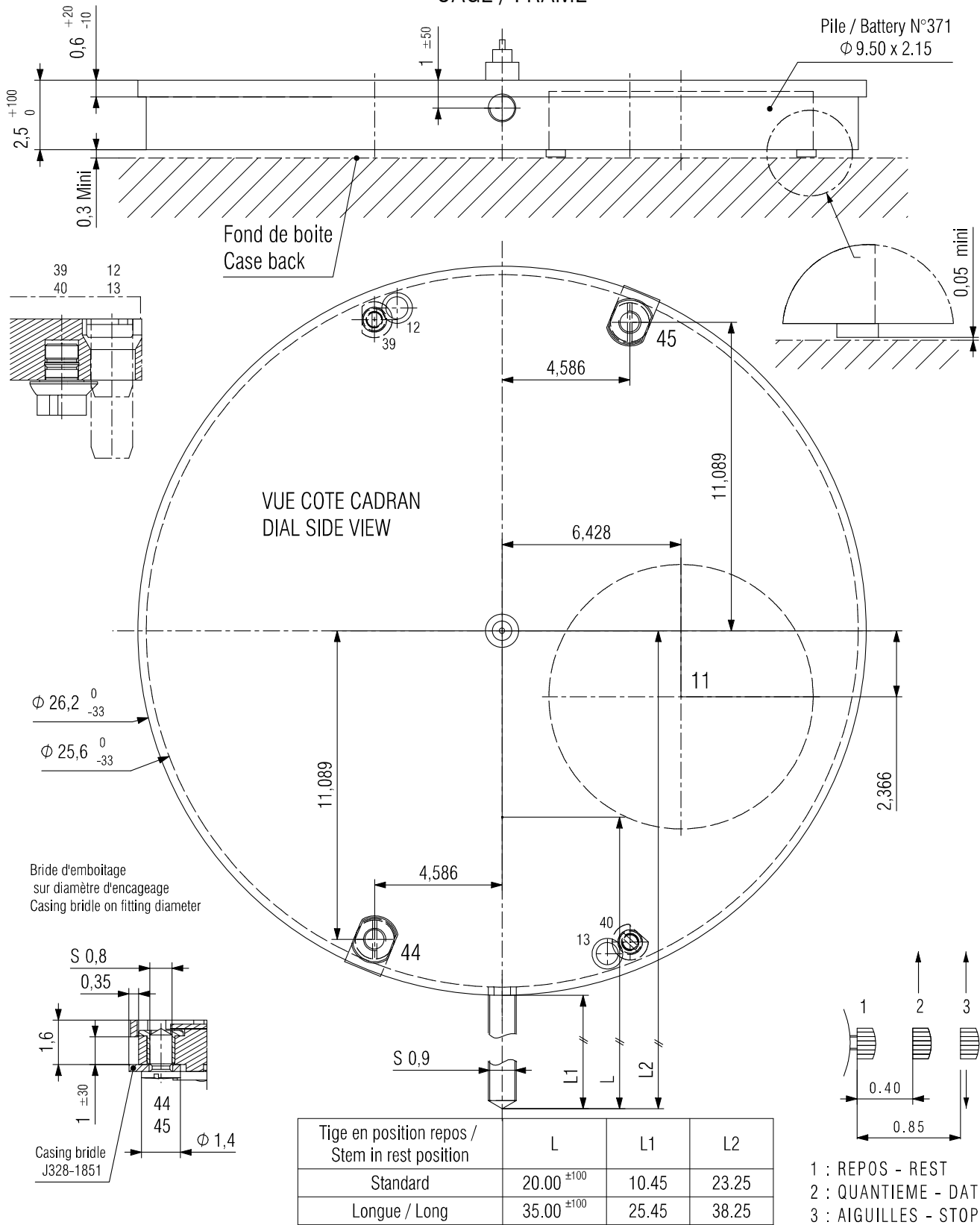
Kennzeichnungen :

Metall Herz Werk reparierbar, 3 Zeiger, Kalender.
Elektronisches Quarzwerk. Schrittschaltmotor, 1 Schritt pro Sekunde.
Lebensende Signal der Batterie.
Batterie-End-Anzeige (EOL): Vorrücken des Sekundenzeigers alle 4 Sekunden (4-Schritt-Motorimpuls).
3 Stellwellenpositionen.
5 Steine.

Critères Criteria Kriterium	Conditions Conditions Bedingungen	Min.	Typ.	Max.	Unités Units Einheit
Consommation - Current consumption Stromaufnahme	U=1.55V T=25°C		0.90	1.15	µA
Marche instantanée - Instantaneous rate Momentaner Gang	U=1.55V T=25°C	- 0.3 (-9)	- -	+ 0.5 (+15)	s/jour s/day s/Tag (s/mois s/month s/Monat)
Température de fonctionnement Operating temperature Betriebstemperatur		0		50	°C
Résistance aux champs magnétiques Resistance to magnetic fields Magnetfeldabschirmung			1500 (18.8)		A/m (Oe)

Qté Qty Menge	Désignation Designation Bezeichnung	Type Model Typ	Tension Voltage Spannung	Code Code Code	Capacité Capacity Kapazität	Autonomie théorique Theoretical Autonomy Theoretische Gangreserve
1	Pile Battery 9.50 x 2.15 Batterie 9.50 x 2.70	SR 920 SW SR 927 SW	1.55 V	371 395	40 mAh 55 mAh	mois 60 months 65 Monate

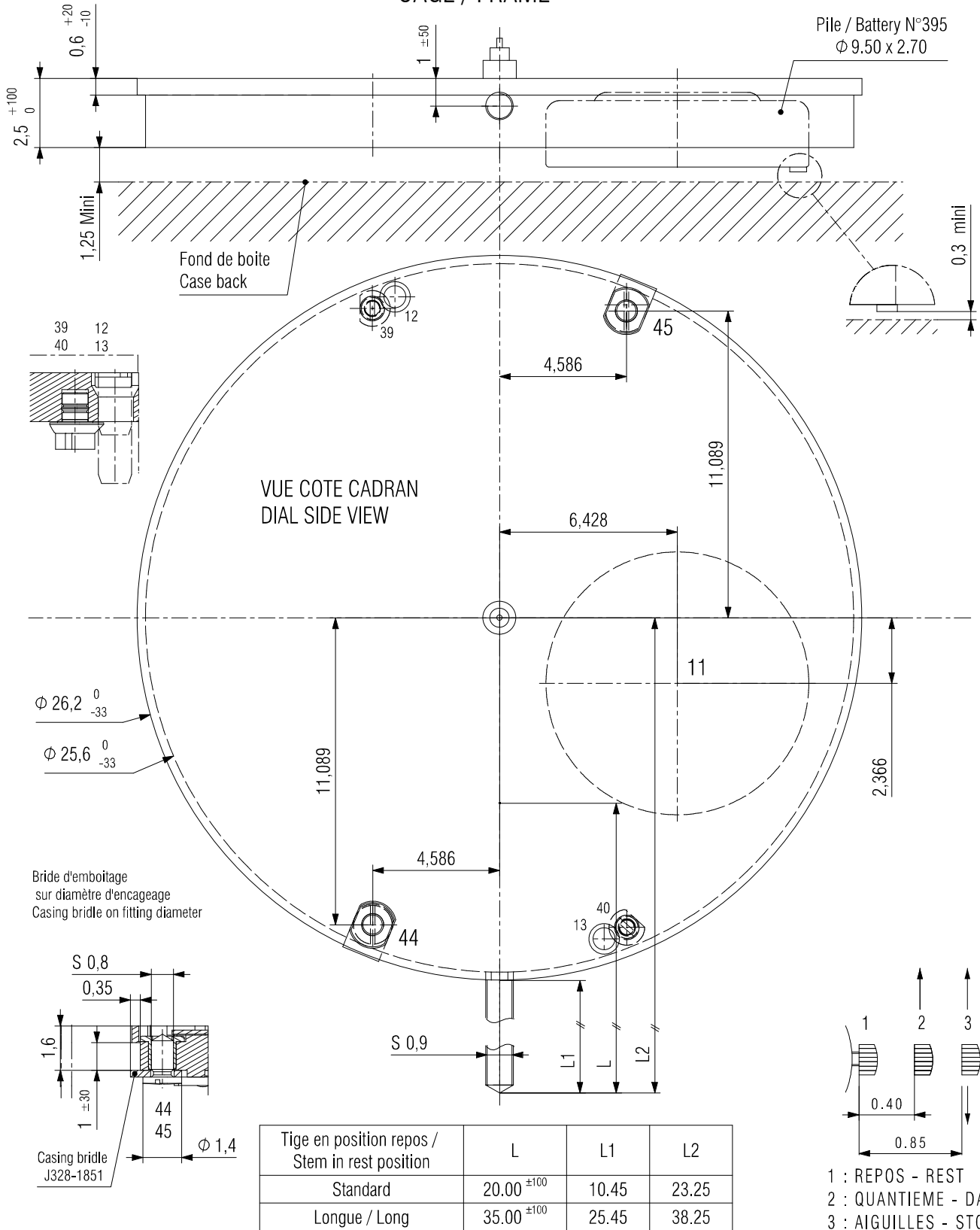
CAGE / FRAME



In conformity with RoHS standard

Doc. n° 0312165 - E Up date . 13.03.2014 - Page 3

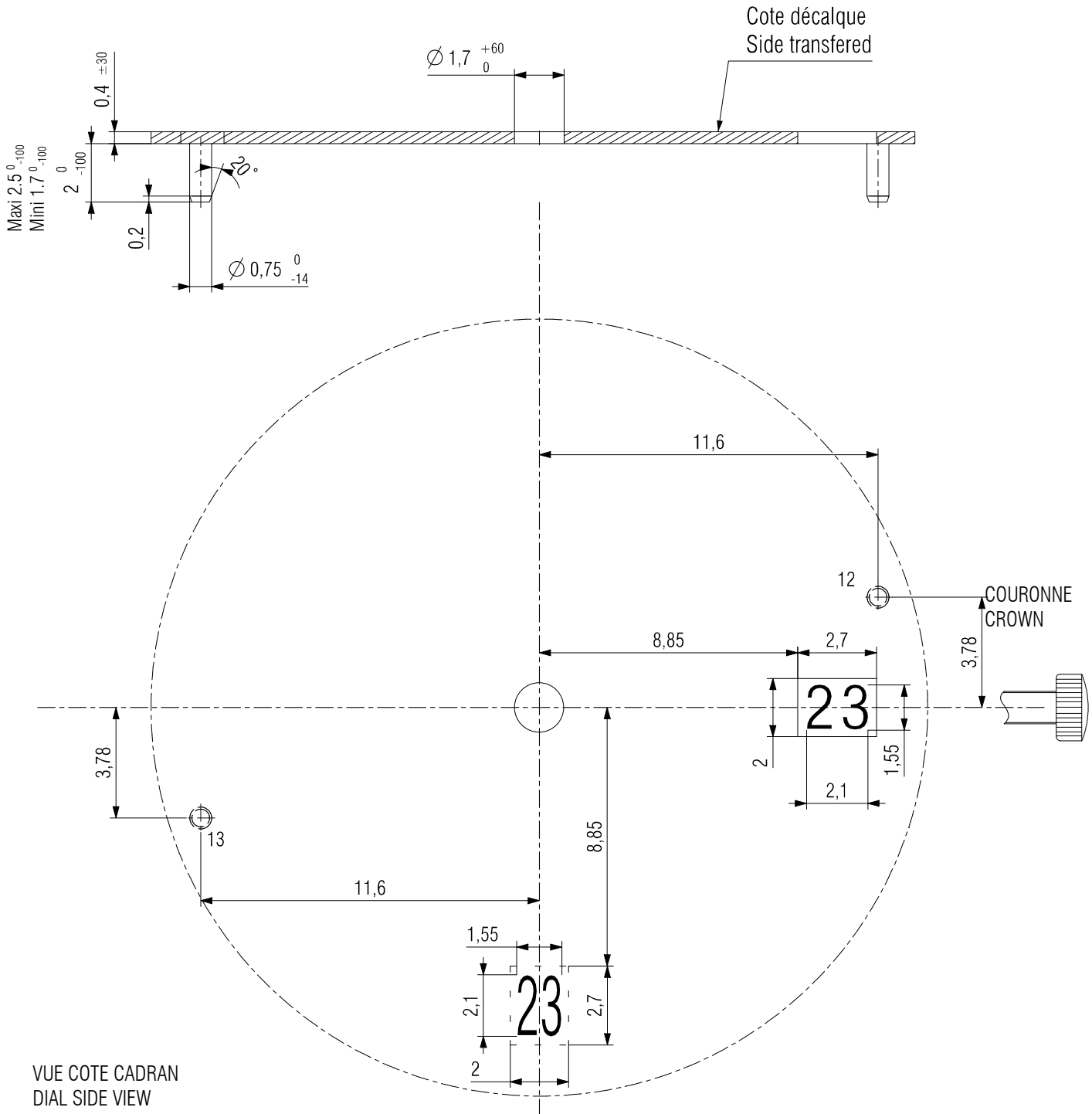
CAGE / FRAME



In conformity with RoHS standard

Doc. n° 0312165 - E Up date . 13.03.2014 - Page 4

CADRAN / DIAL

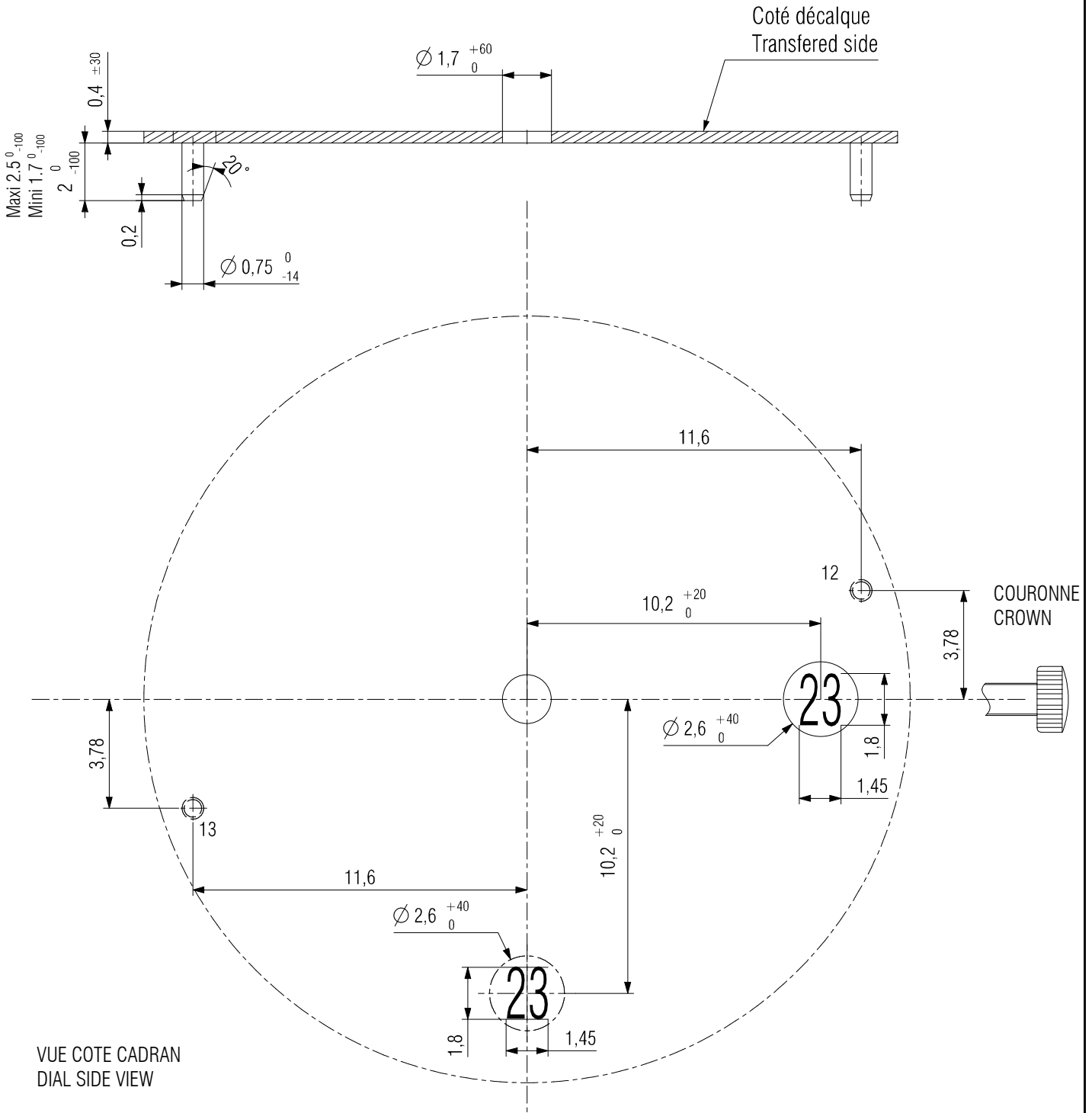


DIMENSIONS IN mm. - TOLERANCES IN µm.

In conformity with RoHS standard

Doc. n° 0312165 - E Up date . 13.03.2014 - Page 5

CADRAN / DIAL



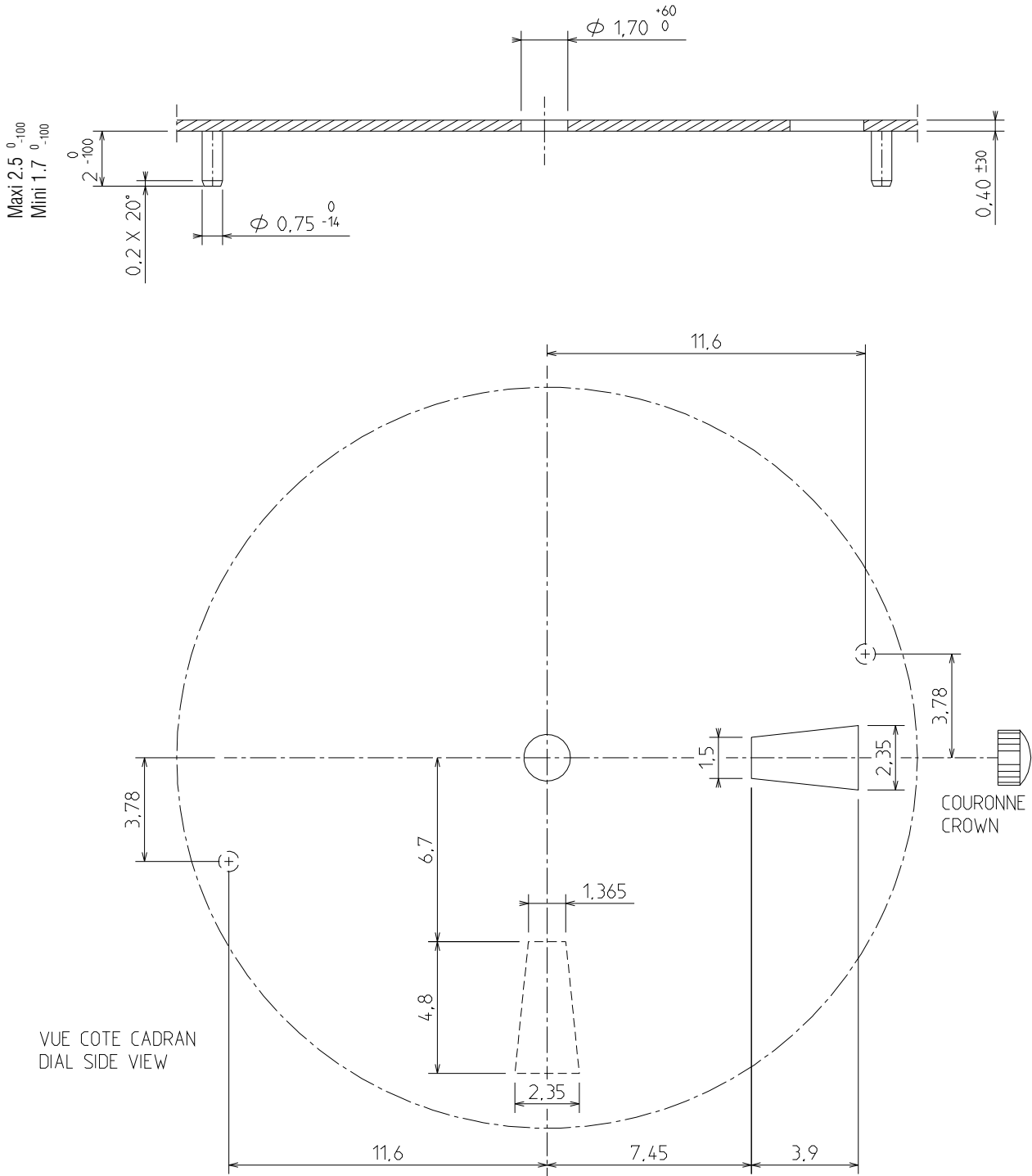
DIMENSIONS IN mm. - TOLERANCES IN μ m.

In conformity with RoHS standard

Doc. n° 0312165 - E Up date . 13.03.2014 - Page 6

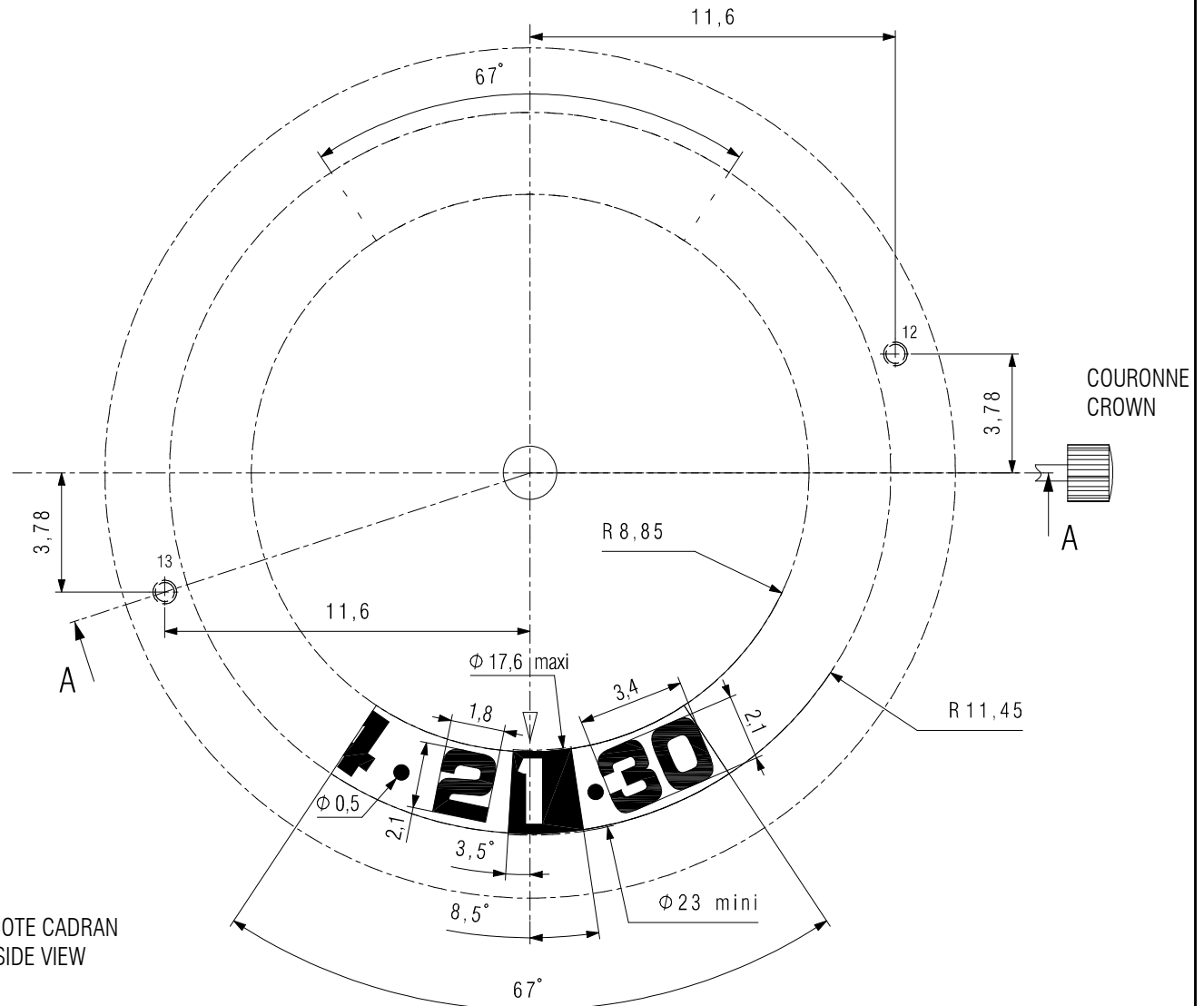
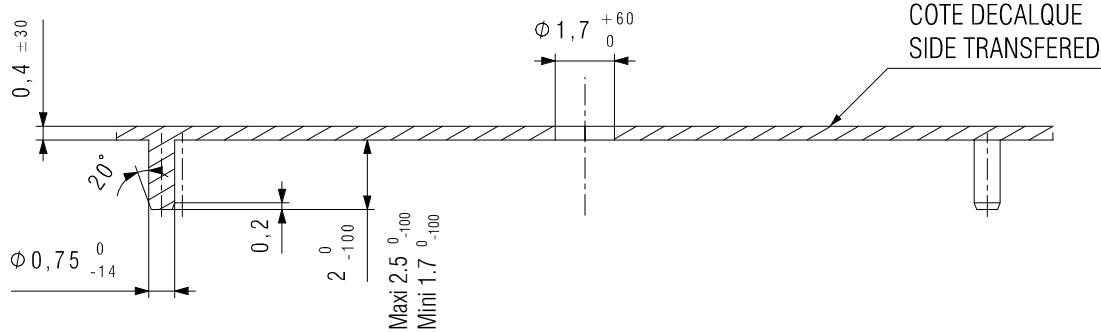
CADRAN / DIAL

Version grand dateur
Big date version



DIMENSIONS IN mm. - TOLERANCES IN μ m.

CADRAN / DIAL



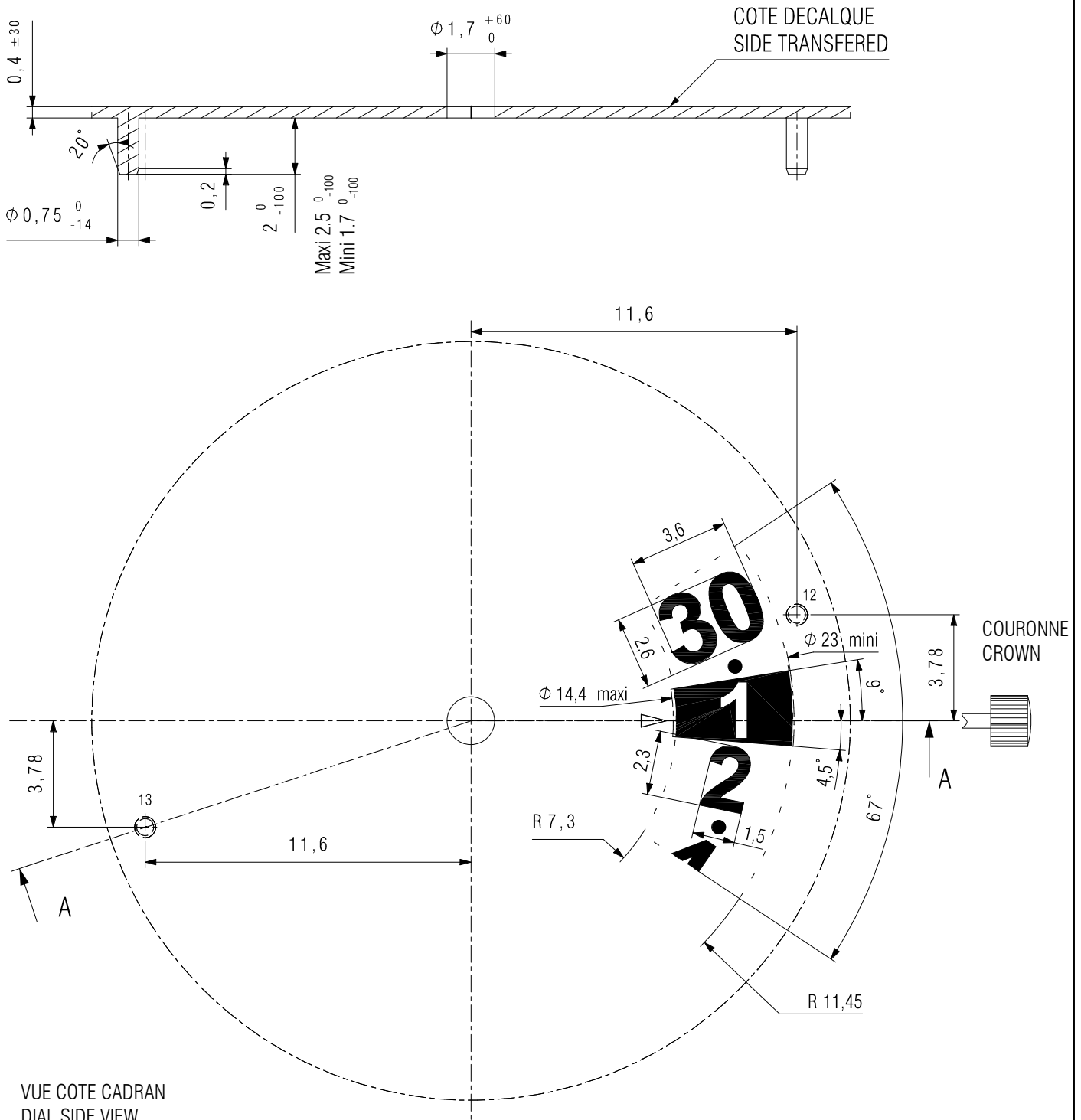
VUE COTE CADRAN
DIAL SIDE VIEW

DIMENSIONS IN mm. - TOLERANCES IN μ m.

In conformity with RoHS standard

Doc. n° 0312165 - E Up date . 13.03.2014 - Page 8

CADRAN / DIAL



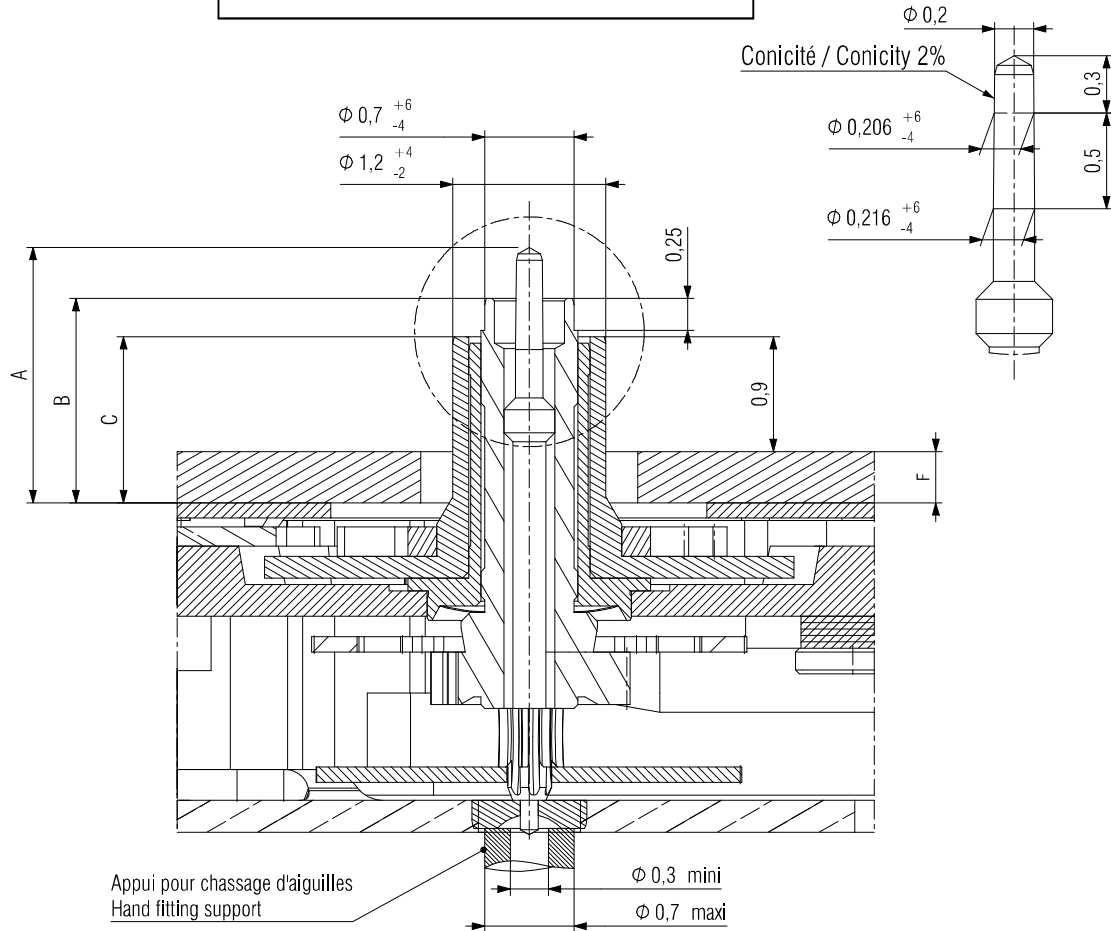
DIMENSIONS IN mm. - TOLERANCES IN μm.

In conformity with RoHS standard

Doc. n° 0312165 - E Up date . 13.03.2014 - Page 9

AIGUILLAGE / HAND-FITTING

AUTRES AIGUILLAGES SUR DEMANDE



AIGUILLAGE / HAND-FITTING	Dépassement / Height over dial seat			Epaisseur cadran / Dial Thickness
	A Pignon Central / Central wheel pinion	B Chaussée / Cannon pinion	C Roue des heures / Hour wheel	
N°2	1.48	1.16	0.81	0.40
N°3	2.00	1.60	1.30	0.90 maxi.
N°Z	2.40	1.90	1.40	1.00 maxi.
Hauteur tube / Pipe height	0.60	0.25	0.60	-
CHOCS 450 g / 450 g SHOCKS	Masse / Mass	Balourd / Unbalance	Inertie / inertia	FORCE DE CHASSAGE PRESS-IN-FORCE
Aiguille des heures / Hour Hand	≤ 15 mg	≤ 0.8 μNm	-	≤ 50 N
Aiguille des minutes / Minute Hand	≤ 15 mg	≤ 0.8 μNm	-	≤ 50 N
Trotteuse centrale - Central Hand	≤ 10 mg	≤ 0.04 μNm	-	≤ 50 N

DIMENSIONS IN mm. - TOLERANCES IN μm.